



# Centro de Interpretación del Manantial de Arteta.

Nature and beach — Visitor centres / Park visitor centres / Nature learning centres



## 📍 Street

San Juan, Planta Baja 31172  
Ollo, Navarra/Nafarroa (Navarra/Nafarroa)  
Spain

## ☎ Contact

Tel 901502503

<https://www.mcp.es/actividades/centrosinformacion>

## 📅 Created by

Zannai Face Dancer 05/09/2019

## 📅 Last modification by

Zannai Face Dancer 16/11/2019



Information about the accessibility of this tourist resource has been provided by users

## General Information

El manantial o nacedero de Arteta está ubicado en el valle de Ollo, a unos 30 kilómetros de Pamplona. Se trata de una meseta caliza de altitud media. Se ha constituido un centro de información y educación ambiental dedicado a la historia de la sierra de Andía, ya que el manantial de Arteta es una de las salidas naturales de su acuífero.

## Entrance



Entrance: No slopes, embossed, inclined plane / ramp

### Ramp information

The slope makes the ramp : Can be used autonomously

- ✓ Hand rail

The entranceway analysed is: The main one

Width of the entrance door: Greater than or equal to 78 cm

## Inside circulation



Wheelchair circulation: Total

Adequate lighting: No

- ✓ Without elements that can suppose an obstacle for a person with a visual disability

Signposting: Yes

### Characteristics

Signs: With texts in braille

- ✓ Establishment with more than one floor

### Vertical itinerary

Transit between floors via: Lift / lifts, steps / stairs

### Lift information

Dimensions of the cubicle: Medium

Lift buttons: Highly embossed, in braille, of contrasting colour

- ✓ Lift buttons at a suitable height for wheelchair users

### Stair information

Number of steps: More than 3

Height of the step in cm: 18

## Adapted toilet in common areas

- ✓ Toilet suitable for PRM

### Characteristics



Access without changes in floor level: Yes

Door width: Greater than or equal to 78 cm

Door opening: Inward

Free turning space ? 150 cm of diameter: Yes

Clear space to transfer to the toilet: Yes

### Characteristics

The space is at least 80 cm or greater: Left-hand side

Height of the toilet seat: Standard (between 40 and 45 cm)

It has support bar(s): Yes

### Information

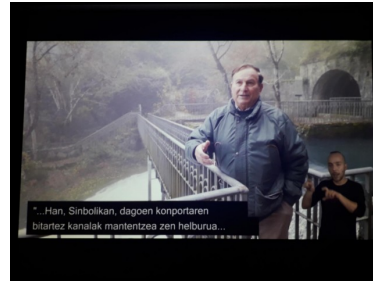
Toilet grab bars: Left-hand side, right-hand side

The bars on the left-hand side are: Folding

The bars on the right-hand side are: Fixed

Sink: Without pedestal

## Services and amenities



Sufficient information provided about accessibility to the tourist resource : Yes

Adapted visits or activities for people with disabilities: Yes

### Characteristics

Adapted visits or activities for people with disabilities: Visual, hearing, cognitive, physical

The furnishings facilitate the approach of wheelchair users: Yes

Magnetic induction loop: Yes

### Characteristics

Information: Portable

- ✓ Subtitled videos / films
- ✓ Videos / films / tours with audiodescription
- ✓ Tactile models
- ✓ Documentation with information about the tourist resource

### Brochures, dossiers, menus, etc.

Features of the documentation: In braille, easy to read, in large print and contrasting colours

- ✓ Customer service staff

### Staff training

Personal trained in attention to people with disabilities : Yes

Personal available to support people with specific needs: No

Personal with knowledge of Sign Language: No

## Outside areas

Sidewalks: Street with slope, paving stones

Uniform and anti-slip pavement: No

## Rating of establishment / place of interest

Rate 1 to 5 general accessibility of the establishment: 4 - Good

Rate 1 to 5 care you received: 5 - Excellent